

# FOOD INDUSTRIES

FDA APPROVED

# MACHINED SPROCKETS and IDLER WHEELS

## 720/720PT Series

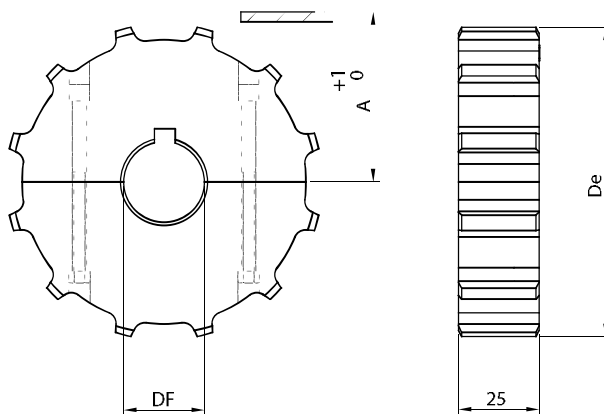
Split sprockets

material: polyamide PA white - screw in stainless steel

UNI 6604-69 key seat

CODE	Z	De	Dp	A	Df
S11E1218	12	98,00	98,14	44,7	18*
S11E1225					25
S11E1230					30
S11E1235					35
S11E1240					40
S11E1418	14	114,00	114,18	52,7	18*
S11E1425					25
S11E1430					30
S11E1435					35
S11E1440					40
S11E1618	16	130,00	130,20	60,7	18*
S11E1625					25
S11E1630					30
S11E1635					35
S11E1640					40
S11E1818	18	146,00	146,27	68,8	18*
S11E1825					25
S11E1830					30
S11E1835					35
S11E1840					40
S11E2018	20	162,00	162,37	76,8	18*
S11E2025					25
S11E2030					30
S11E2035					35
S11E2040					40

\* plain bore



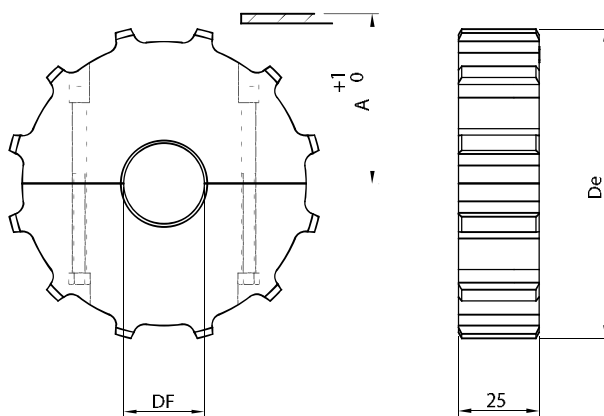
ACCESSORIES

Split idler wheels

material: polyamide PA white - screw in stainless steel

CODE	Z	De	Dp	A	Df
R11E1218	12	98,00	98,14	44,7	18*
R11E1225					25
R11E1230					30
R11E1235					35
R11E1240					40
R11E1418	14	114,00	114,18	52,7	18*
R11E1425					25
R11E1430					30
R11E1435					35
R11E1440					40
R11E1618	16	130,00	130,20	60,7	18*
R11E1625					25
R11E1630					30
R11E1635					35
R11E1640					40
R11E1818	18	146,00	146,27	68,8	18*
R11E1825					25
R11E1830					30
R11E1835					35
R11E1840					40
R11E2018	20	162,00	162,37	76,8	18*
R11E2025					25
R11E2030					30
R11E2035					35
R11E2040					40

\* plain bore

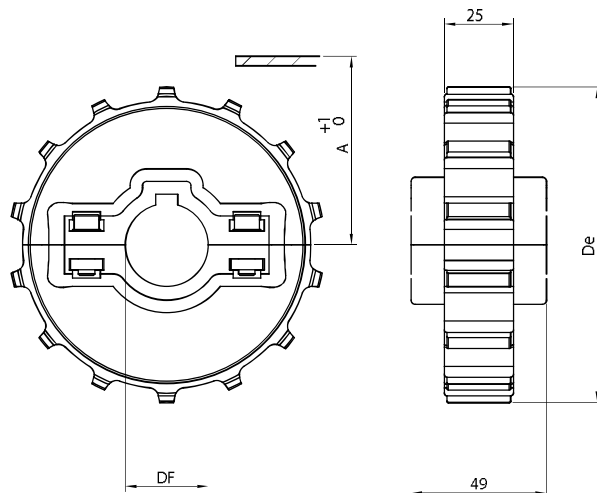


# INJECTED SPROCKETS and IDLER WHEELS

## 720/720PT Series

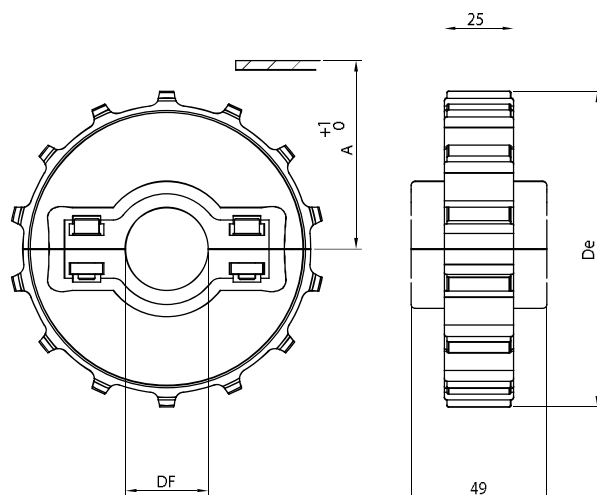
Split sprockets  
material: reinforced polyamide - screw in stainless steel  
UNI 6604-69 key seat

CODE	Z	De	Dp	A	Df
S10E1430	14	114,00	114,18	52,70	30
S10E1435					35
S10E1440					40
S10E1630	16	130,00	130,20	60,70	30
S10E1635					35
S10E1640					40
S10E1645					45
S10E1830	18	146,00	146,30	68,80	30
S10E1835					35
S10E1840					40
S10E1845					45
S10E2030	20	162,00	162,40	76,80	30
S10E2035					35
S10E2040					40
S10E2045					45



Split idler wheels  
material: reinforced polyamide - screw in stainless steel

CODE	Z	De	Dp	A	Df
R10E1430	14	114,00	114,18	52,70	30
R10E1435					35
R10E1440					40
R10E1630	16	130,00	130,20	60,70	30
R10E1635					35
R10E1640					40
R10E1645					45
R10E1830	18	146,00	146,30	68,80	30
R10E1835					35
R10E1840					40
R10E1845					45
R10E2030	20	162,00	162,40	76,80	30
R10E2035					35
R10E2040					40
R10E2045					45

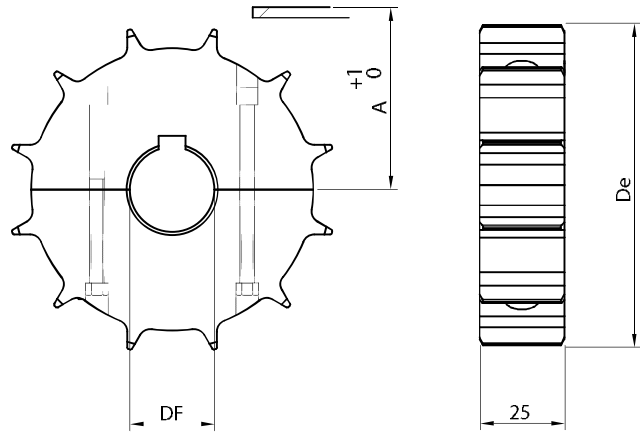


# MACHINED SPROCKETS and IDLER WHEELS 730/730PT Series

Split sprockets

material: polyamide PA white - screw in stainless steel  
UNI 6604-69 key seat

CODE	Z	De	Dp	A	Df
S11H1218	12	97,90	98,14	42,7	18*
S11H1225					25
S11H1230					30
S11H1235					35
S11H1240					40
S11H1318	13	105,54	106,14	46,7	18*
S11H1325					25
S11H1330					30
S11H1335					35
S11H1340					40
S11H1418	14	114,00	114,18	50,7	18*
S11H1425					25
S11H1430					30
S11H1435					35
S11H1440					40
S11H1518	15	112,60	122,2	54,6	18*
S11H1525					25
S11H1530					30
S11H1535					35
S11H1540					40
S11H1618	16	130,00	130,2	58,7	18*
S11H1625					25
S11H1630					30
S11H1635					35
S11H1640					40
S11H1818	18	146,00	146,28	66,7	18*
S11H1825					25
S11H1830					30
S11H1835					35
S11H1840					40



S11H2018	20	162,00	162,37	74,8	18*
S11H2025					25
S11H2030					30
S11H2035					35
S11H2040					40
S11H2118	21	171,00	170,42	78,9	18*
S11H2125					25
S11H2130					30
S11H2135					35
S11H2140					40

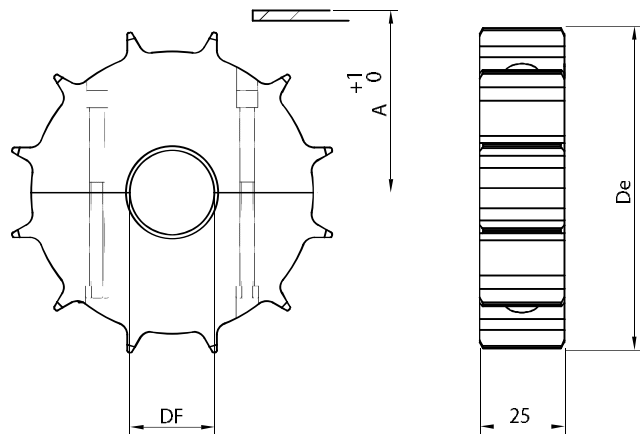
\* plain bore

ACCESSORIES

Split idler wheels

material: polyamide PA white - screw in stainless steel

CODE	Z	De	Dp	A	Df
R11H1218	12	97,90	98,14	42,7	18*
R11H1225					25
R11H1230					30
R11H1235					35
R11H1240					40
R11H1318	13	105,54	106,14	46,7	18*
R11H1325					25
R11H1330					30
R11H1335					35
R11H1340					40
R11H1418	14	114,00	114,18	50,7	18*
R11H1425					25
R11H1430					30
R11H1435					35
R11H1440					40
R11H1518	15	112,60	122,2	54,6	18*
R11H1525					25
R11H1530					30
R11H1535					35
R11H1540					40
R11H1618	16	130,00	130,2	58,7	18*
R11H1625					25
R11H1630					30
R11H1635					35
R11H1640					40
R11H1818	18	146,00	146,28	66,7	18*
R11H1825					25
R11H1830					30
R11H1835					35
R11H1840					40



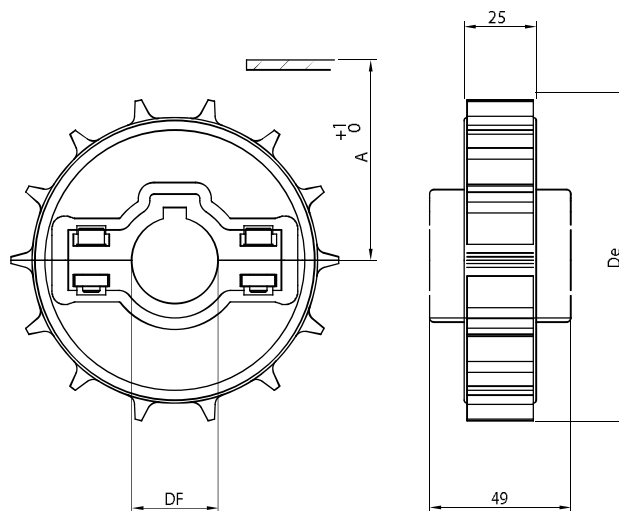
R11H2018	20	162,00	162,37	74,8	18*
R11H2025					25
R11H2030					30
R11H2035					35
R11H2040					40
R11H2118	21	171,00	170,42	78,9	18*
R11H2125					25
R11H2130					30
R11H2135					35
R11H2140					40

\* plain bore

# INJECTED SPROCKETS and IDLER WHEELS 730/730PT Series

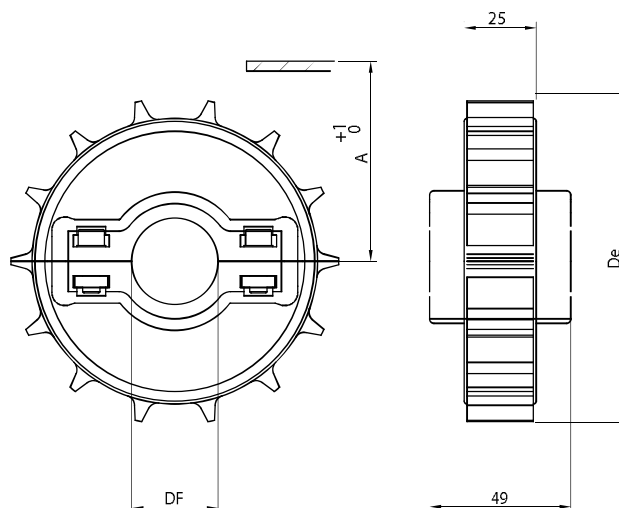
Split sprockets  
material: reinforced polyamide - screw in stainless steel  
UNI 6604-69 key seat

CODE	Z	De	Dp	A	Df
S10H1430	14	113,68	114,18	50,70	30
S10H1435					35
S10H1440					40
S10H1630	16	130,00	130,2	58,70	30
S10H1635					35
S10H1640					40
S10H1645					45
S10H1830	18	144,00	146,3	66,70	30
S10H1835					35
S10H1840					40
S10H1845					45
S10H2030	20	162,00	162,4	74,80	30
S10H2035					35
S10H2040					40
S10H2045					45



Split idler wheels  
material: reinforced polyamide - screw in stainless steel

CODE	Z	De	Dp	A	Df
R10H1430	14	113,68	114,18	50,7	30
R10H1435					35
R10H1440					40
R10H1630	16	130,00	130,2	58,7	30
R10H1635					35
R10H1640					40
R10H1645					45
R10H1830	18	144,00	146,3	66,7	30
R10H1835					35
R10H1840					40
R10H1845					45
R10H2030	20	162,00	162,4	74,8	30
R10H2035					35
R10H2040					40
R10H2045					45



## MACHINED SPROCKETS and IDLER WHEELS 600 Series

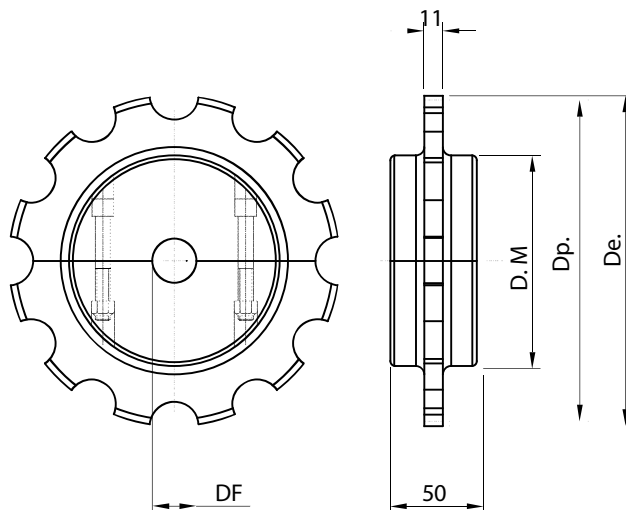
Split sprockets

material: polyamide - screw in stainless steel

UNI 6604-69 key seat

CODE	Z	De	Dp	DM	Df
S11C0820	8	166,0	172,0	105	20*
S11C1020	10	205,0	215,0	105	20*
S11C1220	12	246,0	256,0	105	20*
S11C1420	14	286,0	297,0	105	20*

\* plain bore



ACCESSORIES

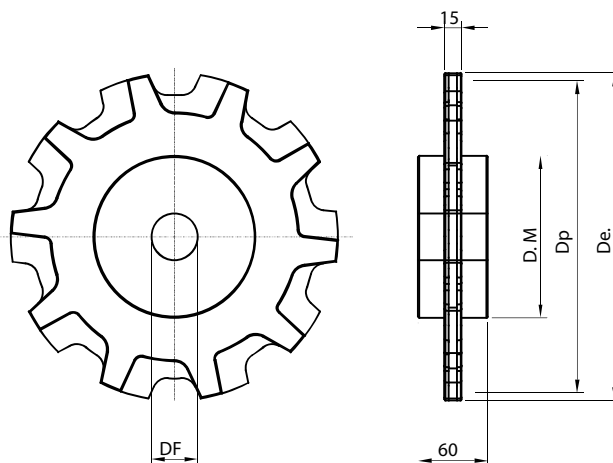
## MACHINED SPROCKETS and IDLER WHEELS 1400 Series

Standard sprockets and idler wheels

material: polyamide

CODE	Z	De	Dp	DM	Df
S01D0819	8	8	204	90	19*
S01D1019	10	10	267	140	19*

\* plain bore



## STRAIGHT GUIDES FOR TAB TYPE CHAINS

780TAB/790TAB/880TAB/881TAB/8811TAB/882TAB/1843TAB/1873TAB/1874TAB series

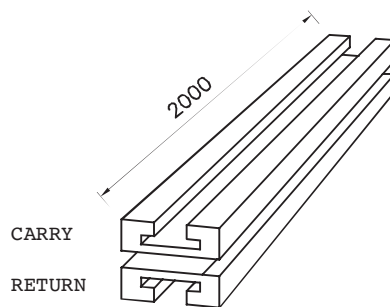
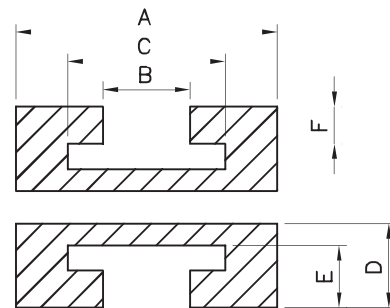
CHAIN TYPE	WIDTH	GUIDE CODE	A	B	C	D	E	F
880TAB K325	82,5	ST182100	100	45	67	25	18	9,5
881TAB K325								
8811TAB K325								
780TAB K330	83,8	ST182100	100					
790TAB K330								
880TAB K330								
880TAB K450	114,3	ST111100	130					
881TAB K450								
8811TAB K450								
880TAB K750	190,5	ST119100	200					
881TAB K750								
8811TAB K750								

882TAB K450	114,3	ST211100	130	60	84	30	24	15
882TAB K750	190,5	ST219100	200					
882TAB K1000	254	ST225100	270					
882TAB K1200	304,8	ST230100	320					

1843 T K125	31,8	ST532100	50	22,5	35	25	17	9,5
1843 T K200	50,8	ST551100	70	22,3				
1843 T K325	82,5	ST582100	100	22,3				

1873/1874 T K325	82,5	ST482100	100	35	70	35	29	19
1873/1874 T K450	114,3	ST411100	130					
1873/1874 T K600	152	ST415100	170					
1873/1874 T K750	190,5	ST419100	200					
1873/1874 T K1000	254	ST425100	270					
1873/1874 T K1200	304,8	ST430100	320					

Supply: 1 piece; carry return sections and return plates are supplied separately.



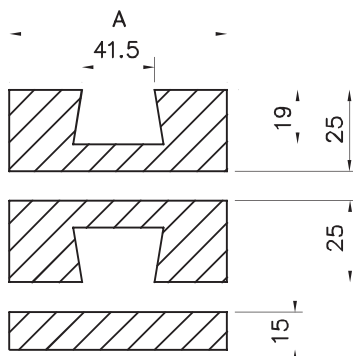
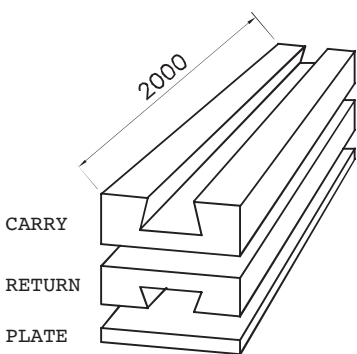
## STRAIGHT GUIDES FOR BEVEL 8° TYPE CHAINS

879/880/881/8811/882 Series

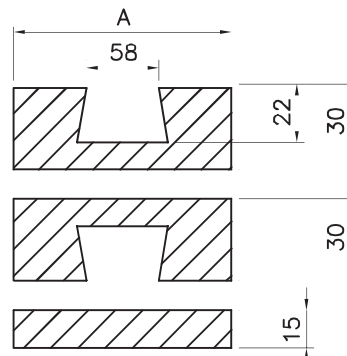
CHAIN TYPE	WIDTH	GUIDE CODE	RET. PLATE CODE	A
880 - K325	82.5	SB182100	RB182100	100
881 - K325				
8811 - K325				
880 - K450	114.3	SB188100	RB188100	130
881 - K450				
8811 - K450				
880 - K750	190.5	SB119100	RB119100	200
881 - K750				
8811 - K750				

882 - K450	114.3	SB211100	RB211100	130
882 - K750	190.5	SB219100	RB219100	200
882 - K1000	254.0	SB225100	RB225100	270

Supply: 1 piece; carry return sections and return plates are supplied separately.



880/881/881 BEVEL



882 BEVEL

ALWAYS CHECK THE A DIMENSION